

PW1-MEV4-3

Multiple Tenancy Range



IP23

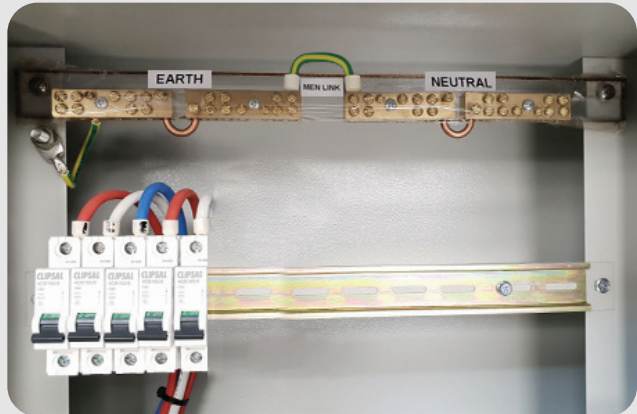
Enclosure Range



Fuse Holder



Meter Neutral Link



Earth & Neutral Grid

Technical Specifications

Code	Occupancy	Width	Height	Depth	Panel Size
PW1 - MEV4 - 3	3 Meter	495 mm	940 mm	355 mm	400 x 600 mm

Pre - Wired					
16 mm Flex Pre - wired Options	Order Code	Service Fuses	Meter Fuse Holders	Sub Mains MCB	Quantity
Single Phase 3 Meter	PW1 - MEV4 - 3	3 X 100A	3 X 100A	3 X 1P 50A	1
Three Phase 3 Meter - Vic 6 Spec	PW3 - MEV6 - 3	3 X 100A	9 X 100A	3 X 3P 50A	1

Available Accessories

Accessory/Spare Parts	Order Code	Description	Quantity
Vic 4 Rain Hood	RHV4	▶ Victoria 4 Rain Hood / Canopy	1
Vic 4 Plinth	PLV 4 - 65	▶ 3mm Steel 650 (H) x 490 (W) x 300(D)	1

KEY FEATURES

- ▶ Victorian Electricity Supply Industry (VESI) Accepted
- ▶ IP23 Protection Rating
- ▶ Compliant with Victorian Service and Installation Rules (VESI Acceptance Number SIR140216B)
- ▶ 150mm Behind Meter Panel
- ▶ Galvanised steel construction Powder Coated Light Grey (RAL7035)
- ▶ Designed to AS/NZS 3000:2018 requirements
- ▶ 8 Module full DIN
- ▶ Consumer Main Switches - Available for 3 x Clipsal 4CB150/6MCB' or 4x Clipsal 4CB150/6MCB's
- ▶ Hand Operated Service Fuse Holder (22mm Fuse Link Diameter)
- ▶ Suitable for up to 100A / 35mm² Supply - Only for PW1-MEV4-4
- ▶ Door cable protector
- ▶ Door open strap for easy installation & maintenance
- ▶ Plinth, Rainhood available as extras (PW1-MEV4-3) and flush mount available (PW1-MEV4-4)