

PW1-MEV6-6

Multiple Tenancy Range



IP23

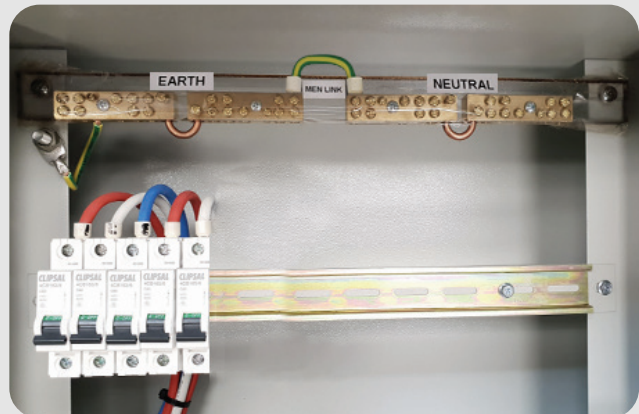
Enclosure Range



Fuse Holder



Meter Neutral Link



Earth & Neutral Grid

Technical Specifications

Code	Occupancy	Width	Height	Depth	Panel Size
PW1 - MEV6-6	6 Meter	695 mm	940 mm	355 mm	600 x 600 mm

Pre - Wired					
16 mm Flex Pre - wired Options	Order Code	Service Fuses	Meter Fuse Holders	Sub Mains MCB	Quantity
Single Phase 6 Meter	PW1 - MEV6 - 6	3 X 100A	6 X 100A	6 X 1P 50A	1

Available Accessories

Accessory/Spare Parts	Order Code	Description	Quantity
Vic 6 Rain Hood	RHV6	▶ Victoria 6 Meter Rain Hood / Canopy	1
Vic 6 Plinth	PLV 6 - 65	▶ Victorian 6 Meter Plinth 3mm Steel 650 (H) x 690 (W) x300(D)	1

KEY FEATURES

- ▶ Victorian Electricity Supply Industry (VESI) Accepted
- ▶ IP23 Protection Rating
- ▶ Compliant with Victorian Service and Installation Rules (VESI Acceptance Number SIR140216B)
- ▶ 150mm Behind Meter Panel
- ▶ Galvanised steel construction Powder Coated Light Grey (RAL7035)
- ▶ Designed to AS/NZS 3000:2018 requirements
- ▶ 20 or 18 Module full DIN
- ▶ Consumer Main Switches - 6 x 50 AMP MCB
- ▶ Service Neutral Link 1 x 16mm² / 1 x 25mm² / 1 x 70mm²
- ▶ Hand Operated Service Fuse Holder (22mm Fuse Link Diameter)
- ▶ Suitable for up to 100A / 35mm² Supply
- ▶ Door cable protector
- ▶ Door open strap for easy installation & maintenance
- ▶ Plinth, Rainhood available as extras (PW1-MEV6-5) and flush mount available (PW1-MEV6-6)